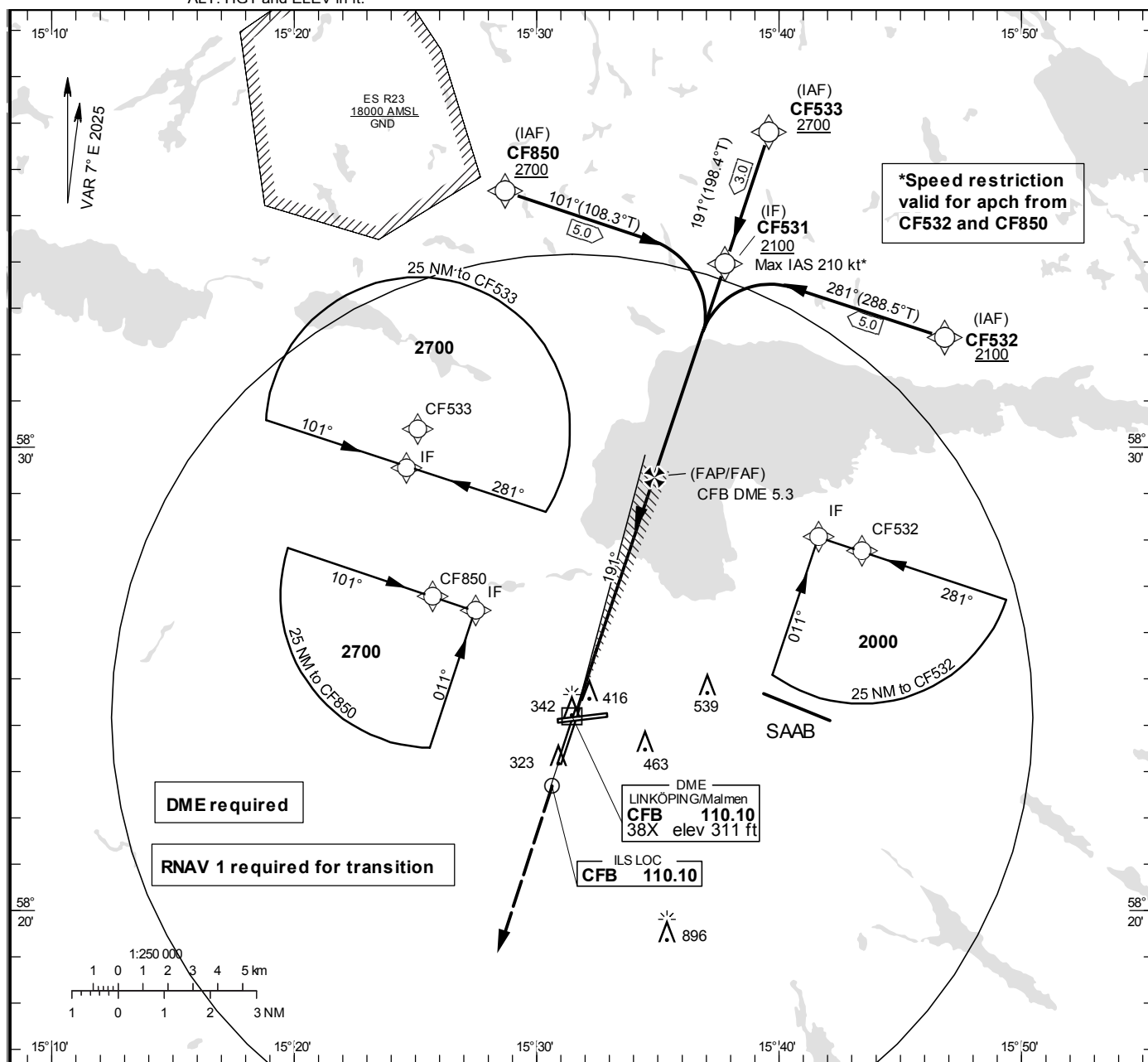


**LINKÖPING/Malmen**  
**ILS or LOC RWY 19****INSTRUMENT  
APPROACH  
CHART – ICAO**

**THR ELEV 295.4 ft, AD ELEV 309 ft**  
OCH are related to THR.  
Circling OCH are related to AD ELEV.  
BRG are MAG  
ALT. HGT and ELEV in ft.

MALMEN TOWER	129.800
ÖSTGÖTA APPROACH	132.955
	135.850

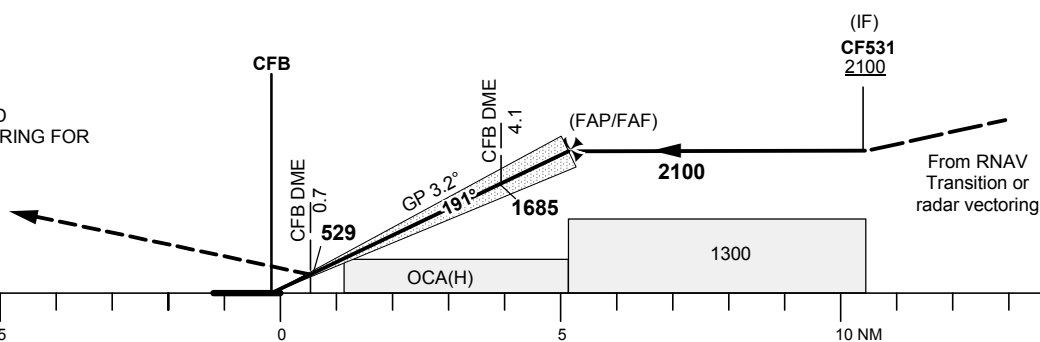


**TA 5000 ft AMSL** **RDH 55.8 ft** **\*Timing not authorized for defining the MAPt**

OM replaced by CFB DME 4.1  
MM replaced by CFB DME 0.7

CLIMB STRAIGHT AHEAD  
TO 2500, RADAR VECTURING FOR  
NEW APPROACH.

LOC  
FAF at CFB DME 5.3 2100  
MAPt at CFB DME 0.7  
Descent grad 5.6% (3.2°)



OCA (H)					Final approach		LOC Distance FAF-MAPt 4.6 NM*				
Cat of ACFT	A	B	C	D	DME CFB NM	2	3	4	5		
Straight-in Approach	Cat I	458 (162)	466 (170)	476 (180)	486 (190)	970	1310	1650	1990		
	LOC	650 (360)				GS	kt	80	100	120	140
Circling		760 (460)	840 (540)	940 (640)	1290 (990)	Time	min:s	3:27	2:46	2:18	1:58
						Rate of descent	ft/min	455	565	680	795
								905	1020		

CHANGE: Editorial